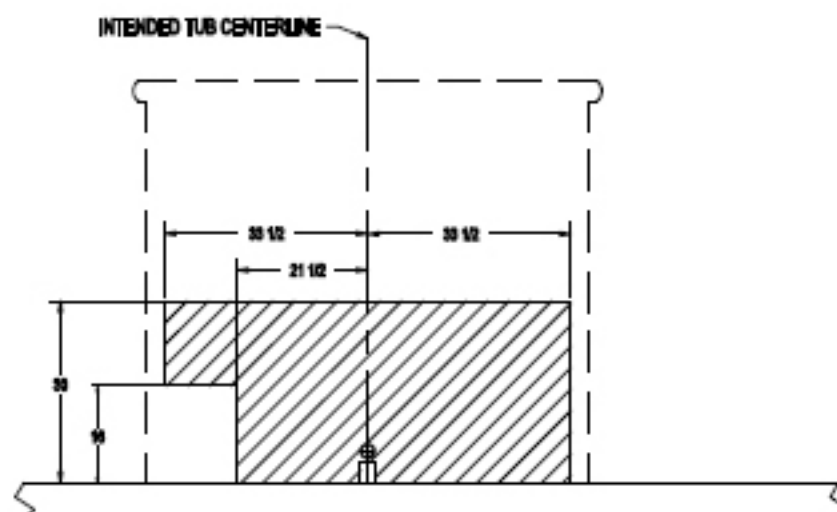
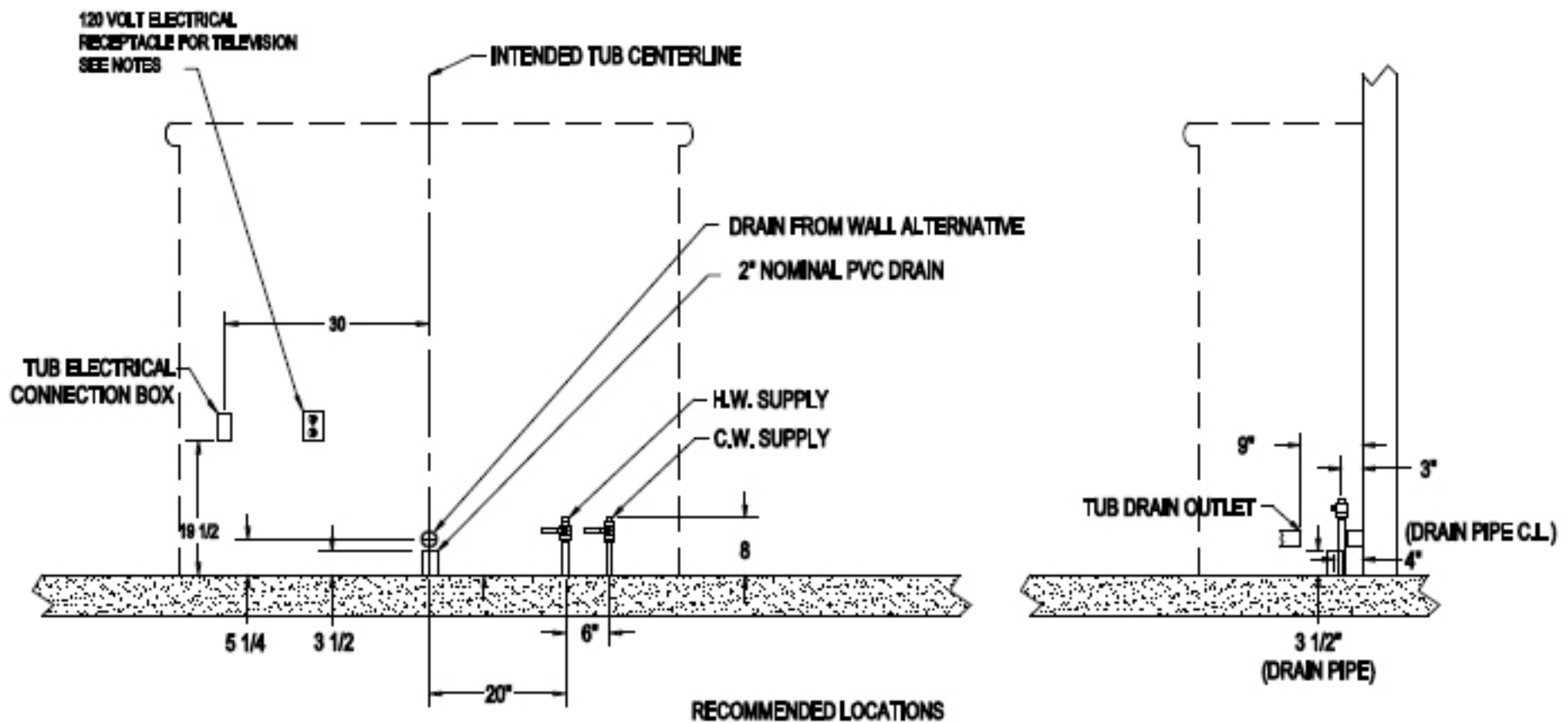


PENNER MFG INC. RIGHT HAND CASCADE - PREMIER SPA ROUGH IN SPECS

- WATER SUPPLY:** 3/4" HW & CW SUPPLY LINES PREFERRED
WITH BALL VALVES W/MALE NPT THREADS (NOT SUPPLIED)
(72" FLEXIBLE STAINLESS STEEL BRAIDED CONNECTING LINES SUPPLIED)
- DRAIN:** DRAIN PIPE FROM FLOOR OR OPTIONAL WALL LOCATION - 2" PVC
(P-TRAP NOT SUPPLIED)
- TUB ELECTRICAL:** TUB ELECTRICAL RATING: 120 VOLTS 7.25 AMPS
TUB ELECTRICAL RATING: 120 VOLTS 9.5 AMPS (WITH SWIVEL LIFT TUB OPTION)
RECOMMENDED ELECTRICAL SUPPLY: 15 AMP WITH GFCI PROTECTION
(NUISANCE TRIPPING MAY OCCUR IF THE WIRING IS TOO LIGHT FOR THE
DISTANCE BETWEEN THE BREAKER AND THE TUB.)
- T.V. ELECTRICAL:** GFCI PROTECTED WALL RECEPTACLE - 120 VOLT - 15 AMP
(T.V. RATING IS APPROXIMATELY 2 AMPS)



**HATCHED AREA IS OPEN WALL SPACE BEHIND THE CABINET
(EXCEPT FOR DRAIN CONNECTION)**
TUB ELECTRICAL SUPPLY BOX, TV RECEPTACLE, AND
WATER SUPPLY VALVES CAN BE LOCATED ANYWHERE
WITHIN THE HATCHED AREA, BUT, ARE RECOMMENDED
TO BE LOCATED AS SHOWN IN THE "RECOMMENDED LOCATIONS" FIGURE.

NOTE: FOR LEFT HAND UNITS, CONTACT PENNER MFG. FOR ROUGH IN SPECIFICATIONS