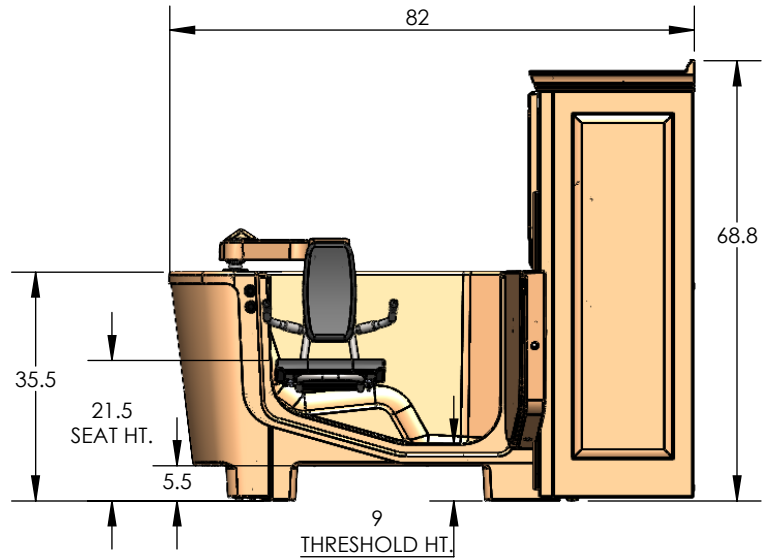
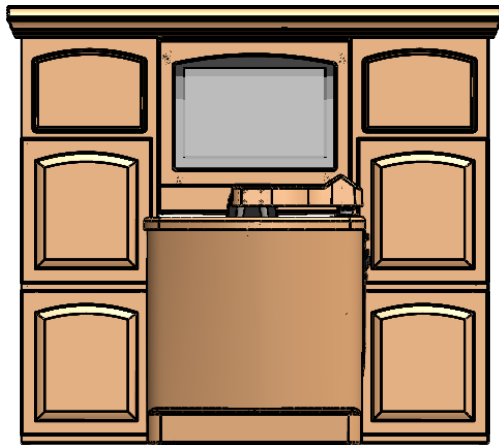
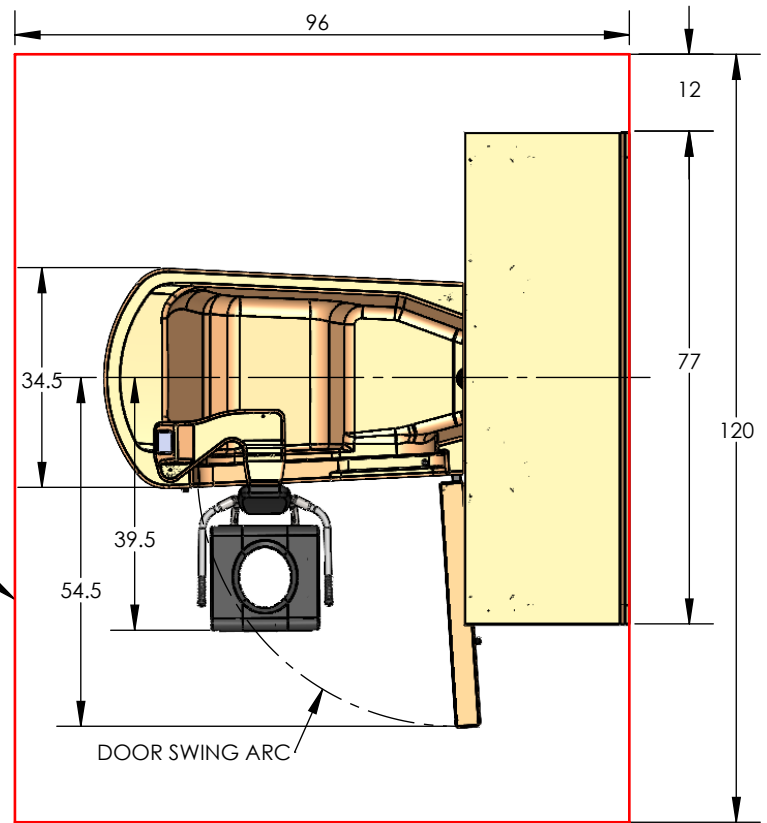


PREMIER RIGHT SIDE POST

27 - TUB INSIDE WIDTH
 45.5 - TUB INSIDE LENGTH
 SEAT BACK TO FRONT TUB WALL

RECOMMENDED CLEAR AREA FOR CAREGIVER, PATIENT LIFT MANEUVERING, MAINTENANCE, AND DOOR SWING

35 1/2 IN. MINIMUM DOOR OPENING WIDTH REQUIRED FOR TRANSPORTING TUB INTO THE ROOM.



MODEL NUMBER	360020-XPL
DESCRIPTION	PREMIER RIGHT
"TUB TYPE" OPTION SELECTED	RIGHT SIDE POST
LIFT SCALE	OPTIONAL (SHOWN)
TUB WATER CAPACITY	80 GALLONS
RESERVOIR WATER CAPACITY	65 GALLONS
FILLED TUB WEIGHT	960 LBS
FILLED CABINET WEIGHT (RESERVOIR)	966 LBS
TUB ONLY WEIGHT	420 LBS
CABINET ONLY WEIGHT	425 LBS
TUB SHIPPING WEIGHT	530 LBS
CABINET SHIPPING WEIGHT	580 LBS

PENNER MFG INC.
 102 GRANT ST.
 AURORA, NE. 68818
 402-694-5003

THE "X" IN THE MODEL NUMBER REPRESENTS A COLOR CODE

11/10/2020