

PACIFIC

Recumbent Height-Adjustable
Bath System 9700

Parts Breakdown and Assembly Manual



Panel 390010-1 Tubs 390011-1 or 390022-1

390748 Revision I – 1/8/2019

PENNER PATIENT CARE, INC
Box 523 / 102 Grant St.
Aurora, NE 68818

1-866-PENNERS

1-866-736-6377

1-800-732-0717

E-mail Address: pennersales@hamilton.net
Web Site: www.pennercareinc.com

Table of Contents

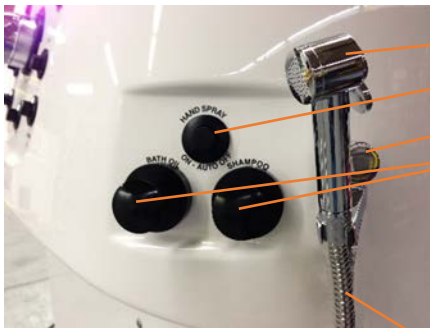
Table of Contents	2
Panel – Front Left Parts	3
Panel – Front Right Parts.....	3
Front Controls	3
Bottle Storage Parts	4
Mixing Valve Parts (Rada 320)	4
Adjustment of the Mixing Valve – Rada 320.....	5
Mixing Valve – Rada 222 Parts	6
Temperature Adjustment of Rada 222 Mixing Valve.....	6
Back of the Control Panel.....	7
Air and Disinfection Parts.....	7
Disinfecting Sprayer Parts	7
Hand Shower Supply Parts	8
Water Screens	8
Water Trap	8
Dispensing Pumps (Back Side).....	9
Solenoid Valve Locations.....	9
Electrical Kit Parts.....	10
Timer Adjustments Explanation	10
Tub Parts.....	11
Jet Parts	11
Checking for the Correct Dilution of Disinfectant.....	12
Actuator Brake Replacement	13
Solenoid Parts Breakdown	14
Dema Injector Parts.....	14

Panel – Front Left Parts



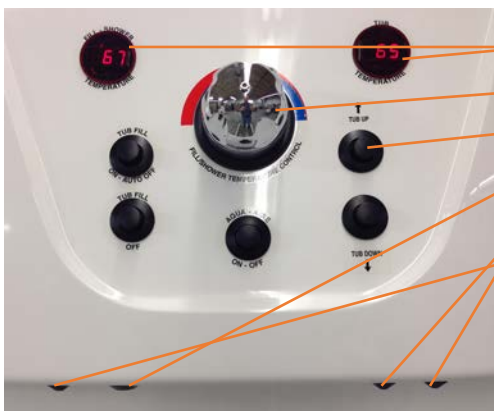
- 140106R - Hand Shower W/Trigger Yellow
- 140104 - Swivel Chrome Elbow - 2 Shown (2 shown)
- 350192CH - Shower Hose Chrome 96" (2 shown)
- 140106CHT - Hand Shower W/ Trigger Chromed
- 350495 - Raised Push Button (4 shown)

Panel – Front Right Parts



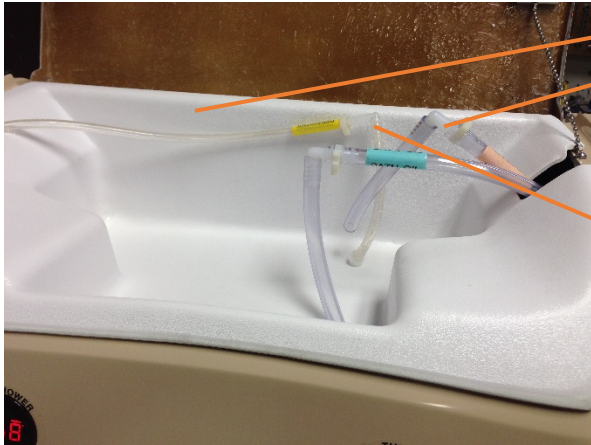
- 140106CHT - Hand Shower W/ Trigger Chromed
- 350495 - Raised Push Button
- 140104 - Swivel Chrome Elbow
- 350200 - Dispenser Pump Complete
- Components:
 - 350201 - "O" Ring for Dispenser Pump
 - 350204 - Spring- Dispenser Pump Replacement
 - 350210 - Nut, pump mount (white)
 - 350215 - Cap, Dispenser Pump
 - 350205 - Spacer - Pump Mount
- 350192CH - Shower Hose Chrome 96"

Front Controls



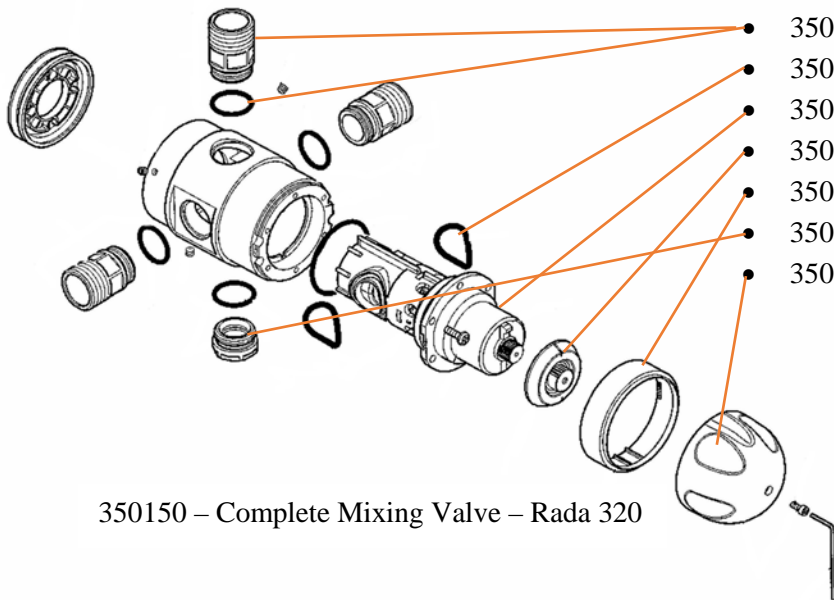
- 350535M-SER - Thermometer (F° or C°)
- 350151 - Rada Valve Cartridge (See page 4 for components)
- 350495 - Raised Push Button (5 shown here)
- 390403 - Spigot – 9700
- 390220 - Dispenser Spout Oil and Shampoo
- 390220 - Modified Dispenser Outlet (Air outlet)

Bottle Storage Parts



- 390390 - Bottle tray
- Shampoo & Bath oil lines
Kit 350198 Includes:
350276 - 3/8" Tubing Clear
201900 - Snap Clamp Size 8
140299 - Plastic Elbow
- Disinfect lines
Kit 350196 Includes:
140261 - 1/4" Clear Hose
106351 - Snap Clamp Size 6
140277 - 1/4" Plastic Elbow
140489 - Foot Strainer

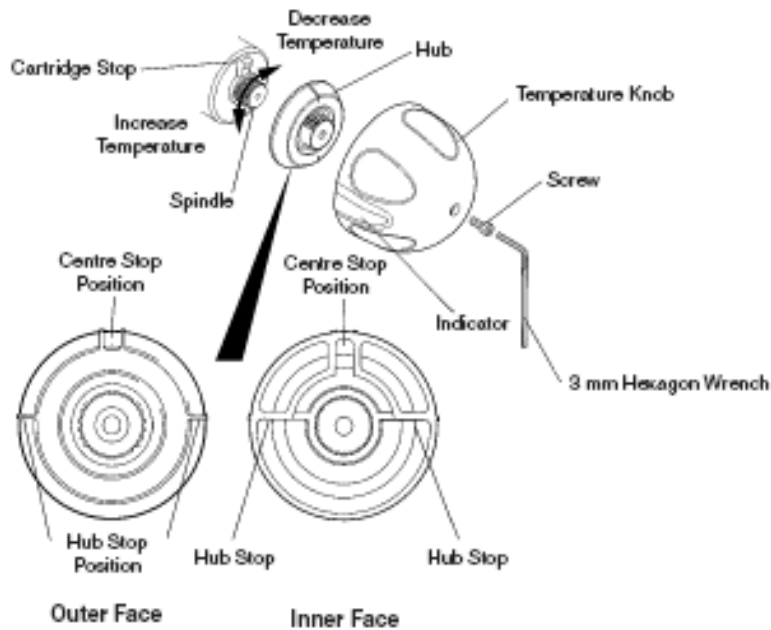
Mixing Valve Parts (Rada 320)



- 350157 - Inlet/Outlet Adapter, 3/4 Female
- 350158 - Seal Pack (includes all O-rings)
- 350151 - Cartridge - with O-rings Rada 320
- 350154 - Hub
- 350152 - Temperature indicating ring
- 350163 - Cap (with O-ring)
- 350162 - Knob Pack (Knob, screw, and wrench)
- 350159 - Screw Pack (includes all screws)

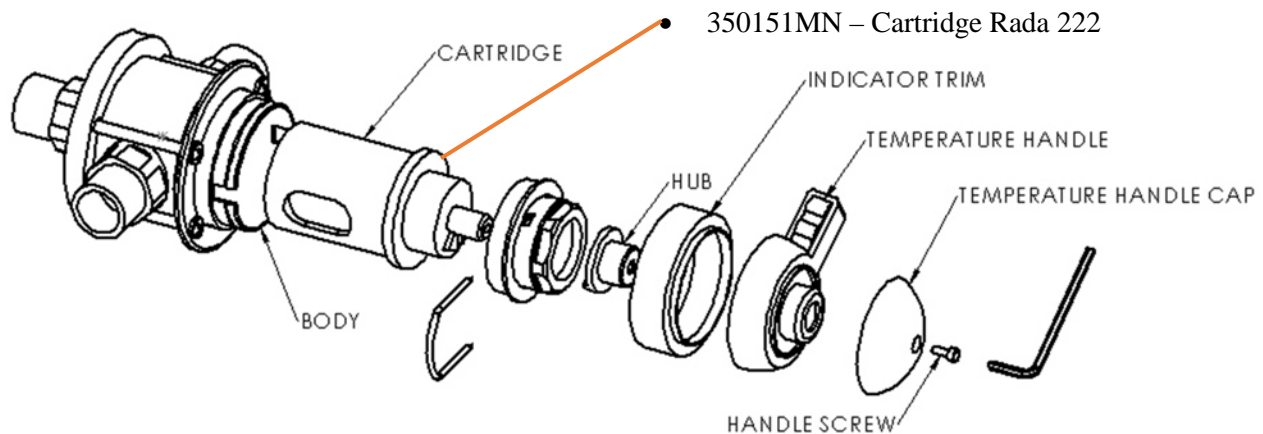
350150 - Complete Mixing Valve - Rada 320

Adjustment of the Mixing Valve – Rada 320

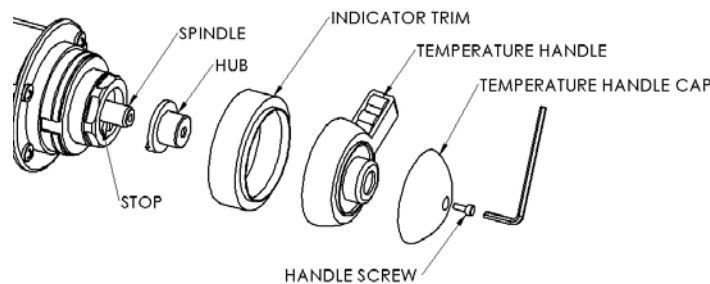


1. Remove the temperature knob screw using a 3 mm hexagonal wrench. Remove the temperature knob.
2. Pull off the black polymer hub assembly which may inadvertently remain attached to the inside of the temperature control handle. This is a “push fit” and can be “levered” out using a thin blade screwdriver or pliers.
3. Rotate the spindle until required maximum blend temperature is obtained at outlet point (**clockwise = decrease temperature, counterclockwise = increase temperature**). **When resistance is felt do not use force to turn any further, as this can damage the internal parts.**
4. Once the desired maximum blend temperature is achieved, re-fit the hub without disturbing the spindle: Position the hub so that the hub stop comes up against the cartridge stop preventing any further rotation in a counterclockwise direction. Check that blend temperature has not altered.
5. Refit the temperature knob. Make sure that the indicator points to 9 o’clock.

Mixing Valve – Rada 222 Parts



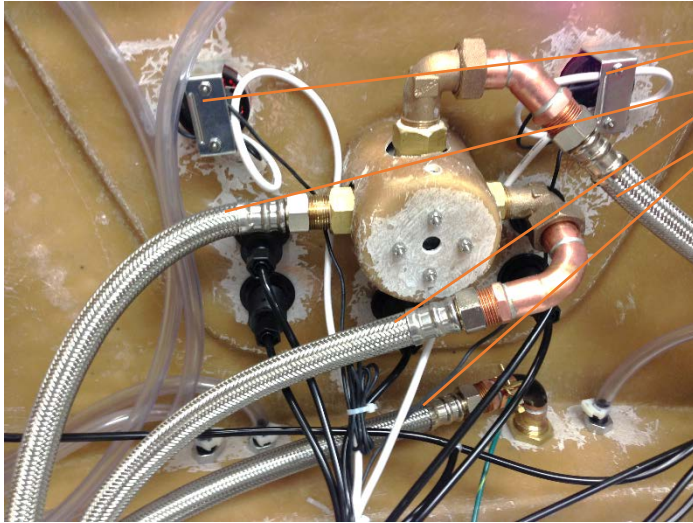
Temperature Adjustment of Rada 222 Mixing Valve



Maximum Temperature Setting

1. Check that an adequate supply of hot water is available at the hot inlet of the mixing valve.
2. Temperatures should always be recorded using a thermometer with proven accuracy.
3. Remove the handle screw, temperature handle cap, temperature handle, and indicator trim using a 3 mm hexagonal key.
4. Pull off the hub.
5. Using the temperature hub, rotate the spindle until the required maximum blend temperature is obtained at the discharge point (rotate clockwise to decrease temperature).
6. If resistance is felt do not use force to turn any further, as this can damage the internal parts.
7. Once the desired maximum blend temperature has been achieved, refit the hub so that the lug is against the side of the stop on the cartridge face, thus preventing counter clockwise rotation past the maximum temperature stop.
8. Check that blend temperature has not altered.
9. Refit the indicator trim, handle, and cap. Then secure with the handle screw using a 3 mm hexagonal key.

Back of the Control Panel



- 350535M - Thermometer F°/C°
- 390100 - Hose 72" Braided
- 350185 - Hose 36" Braided

Air and Disinfection Parts



- 144104 - Vacuum Breaker
- 144110 - Service Kit - Vacuum Breaker 3/8"
- 1404804 - Dema Injector (Jets)
- 390406 - Check Valve Assembly Complete
- 140474 - Check Valve Plastic Black Check Valve
- 390409 - Vacuum Hose 1 1/4" ID

Disinfecting Sprayer Parts

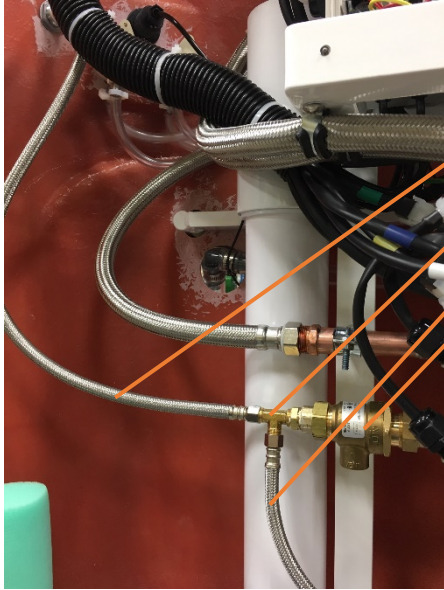


- 140474 - Check Valve - Plastic
- 140124 - Solenoid Valve (See Solenoid Parts Breakdown)
- 390409 - Hose Vac 1 1/4" ID
- 390302 - Dema Injector (for disinfection sprayer)
- 390406 - Check Valve Assembly Complete

Solenoid Valve Identification Colors

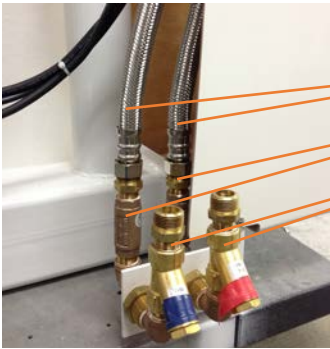
Tub Fill	Rinse Jets	Disinfect Sprayer
Hand Shower	Disinfect Jets	

Hand Shower Supply Parts



- 360496 - HOSE - 30" x 3/8"
- 360441 - Tee - 3/8 X 3/8 Male Run
- 360491 - HOSE - 48" x 3/8"
- 390406 - Check Valve Assembly Complete

Water Screens



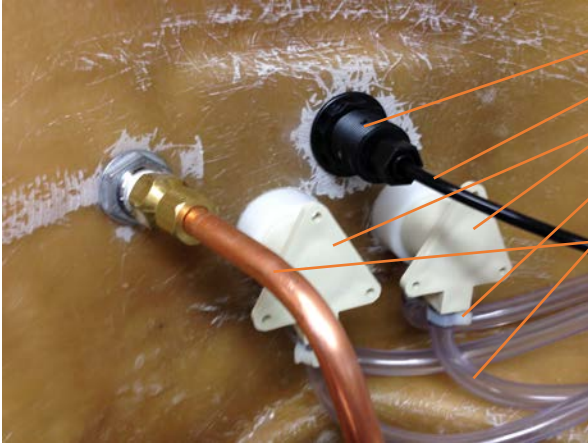
- 390100 - Hose 72" Braided
- 350320 - Check Valve 1/2 (brass)
- 350315 - Screen 1/2" 40 mesh In-line
- 350316 - Replacement Screen Only

Water Trap



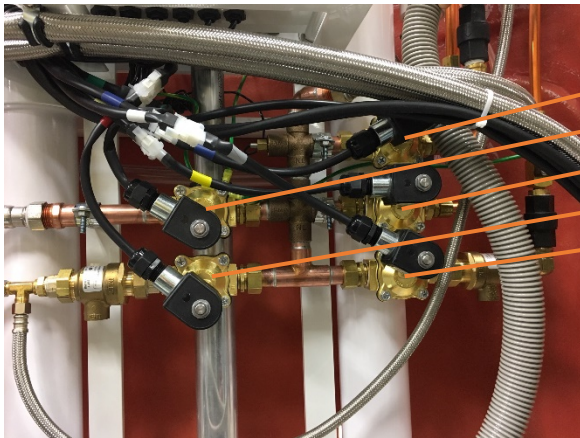
- 3901761 - Water trap assembly
- 390409 - Hose Vac 1 1/4" ID
- 350602 - Blower
(Actuator Motor)
- 391122SER - Replacement Actuator
- 3911221 - Replacement Brake Kit

Dispensing Pumps (Back Side)



- 350495 - Air Transmitter
- 040955 - Tube 1/8" ID
- 350200 - Dispenser Pump (Includes Mounting parts)
- 201900 - Snap Clamp Size 8 (2ea on each pump)
- 350267 - Clear Hose 3/8" ID
- Supply for RH Hand Shower

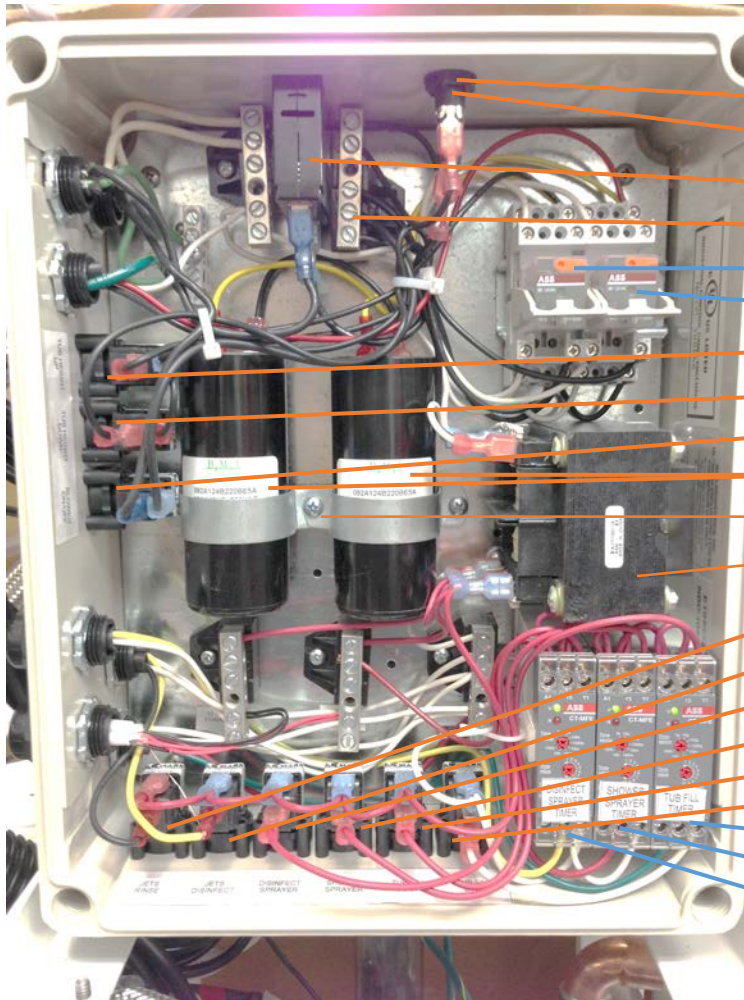
Solenoid Valve Locations



- 140124 - Solenoid Valve - Rinse Jets - **Blue**
- 140124 - Solenoid Valve - Tub Fill - **Green**
- 140124 - Solenoid Valve - Disinfect Jets - **Yellow**
- 140124 - Solenoid Valve - Hand Shower - **Red**
- 140124 - Solenoid Valve - Disinfect Sprayer - **Gray**

Electrical Kit Parts

Electrical Kit can be accessed easily by opening the lid of the Front Panel, removing the bottle tray, and carefully lifting the kit upward to an accessible position. (The first time the electrical kit is remove, a zip tie that secures the kit for shipping must be remove.)



- 350533 - Fuse - 1 Amp SLOBLO
- 350530 - ¼ X 1-1/4" Fuse Holder
- 350526 - Circuit Breaker 15 amp
- 140926 - Neutral Bar with Insulator (5 ea)
- 390540-09 - Up Relay
- 390540-09 - Down Relay
- 350505 - Air Switch - Tub Height Up
- 350505 - Air Switch - Tub Height Up
- 350510 - Air Switch - Blower On/Off
- 390115 - Capacitors Actuator (2 ea)
- 390114 - Clamp (for Capacitors)
- 140952 - Transformer 115 to 24 Volt
- 350505 - Air Switch - Jets Rinse
- 350505 - Air Switch - Jets Disinfect
- 350505 - Air Switch - Disinfect Sprayer
- 350505 - Air Switch - Shower Sprayer
- 350505 - Air Switch - Tub Fill Start
- 370505 - Air Switch - Tub Fill Stop
- 350545-09 - Timer Tub Fill
- 350545-09 - Timer Shower Sprayer
- 350545-09 - Timer Disinfect Sprayer

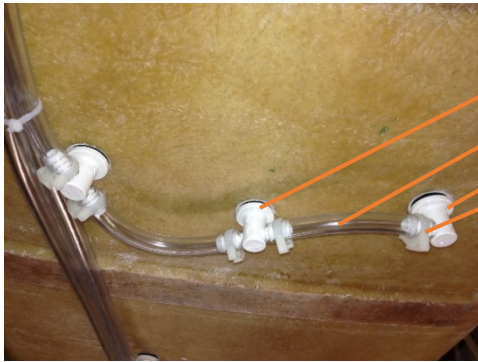
Timer Adjustments Explanation

There are three Timers located in the lower right hand corner of the Electrical Kit (shown above). They are adjusted by setting the timer sector and value. An example is the **Time Sector** setting of 100S = 100 seconds and with the **Time Value** set at 5, the timer is now set for 50 seconds. Another example is the **Time Sector** setting of 1000S = 1000 seconds and with the **Time Value** set at 5, the timer is now set for 500 seconds.

Tub Parts



- 360605 - Manifold
- 390409 - Hose - 1 ¼ ID
- 390177 - Drain Plug Assembly (not shown - inside tub)
- 360630 - Temp probe adapter
- 360637 - Temp probe lock nut
- 360638 - O-ring Buna #108
- 360633 - O-ring Buna #218
- 350255 - Nut, 1 1/4-16 Brass
- 590758 - Hose Clamp 24
- 350276 - Tubing - Clear 3/8 ID
- 390176 - Drain Replacement Kit
(Includes the Base Shoe, Basket, Washer, and Tee)



- 360650- Tee - Air Jet (Washer included)
- 350276 - Tubing - Clear 3/8 ID
- 360655 - Elbow - Air Jet (Washer included)
- 201900 - Snap Clamp -Nylon Size 8

Jet Parts



- 360646 – Cap White
- 360644 – Cap Black
- 350134 – Kit – Internal Jet Replacement
- Jet body
- Washer (Included with Elbow or Tee below)
- 360655 - Elbow – Air Jet (Washer Included)
- 201900 - Snap Clamp Size 08 Nylon
- 360650 - Tee - Air Jet (Washer Included)

Checking for the Correct Dilution of Disinfectant

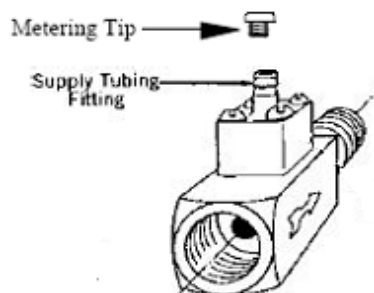
1. Check to see if a container of disinfectant has been installed. Assure that the disinfectant tube is inserted into the container and connected to the Injector with black metering tip. See the drawing of the square injector below for location of the metering tip.
2. Visually check if disinfectant is in the hose all the way to the injector. If not, the disinfectant can be brought to the injector by pushing the “Disinfect Jets” button on the tub until disinfectant fills the hose all the way to the injector.
3. With the drain open, push the fill button on the tub to check the water temperature. Adjust the temperature control to read 60 degrees to 65 degrees (F). When the temperature remains in the above range, turn off the fill button.
4. Allow the water to drain from the tub.
5. Close the tub drain, push and hold the disinfect button long enough to bring the disinfectant mixture into the tub then release the disinfect button.
6. Test the solution in the foot-well of the tub with the Dilution Check Kit (140481). A dispenser of test paper (part number 219201) is included in this kit.
7. Tear off a strip of test paper from the dispenser and immerse in the solution for at least (10) seconds. Compare the color that the test paper turns with the chart on the dispenser. If the test paper matches the green in the range of 600-800, the disinfecting solution is the correct strength.
8. If the color of the test paper matches a color on the dispenser chart in the 800-1000 range, install the next smaller metering tip. See metering tip chart for color reference. The injector is furnished with a black metering tip installed (part number 1404824). The Metering tips listed below are included in the Dilution check kit, (Part number 140481). In a Pacific tub there is a hand sprayer for disinfectant. The injector (273.8) for this is fitted with a red metering tip. A white metering tip, (part number 404823), is included in the Dilution Check Kit (part number 140481).
9. If the color of the test paper matches a color on the dispenser chart in the 0-400 range, contact Penner Mfg for metering troubleshooting instructions.

METERING TIP CHART APPLICABLE TO THE AQUA-AIR JET DISINFECTION INJECTOR

<u>Color</u>	<u>Part Number</u>	<u>Metering Tip Size</u>	<u>Solution Strength</u>
Black	1404824	Large	Preferred Strength
Blue	1404822	Medium	Less Strength

METERING TIP CHART APPLICABLE TO THE PACIFIC HAND SPRAY DISINFECTION INJECTORS

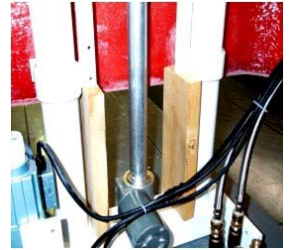
Red	1404825	Medium	More Concentrate
White	1404823	Small	Least Concentrate



Actuator Brake Replacement

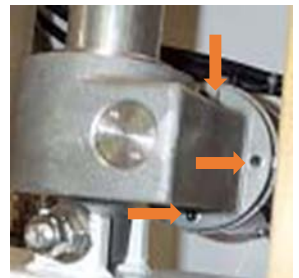
(Kit 3911221 Instructions)

1. Drain the water and remove the entire back panel of the Pacific panel, and the smaller lower back panel (center) for easy access to the Pacific Panel actuator.
2. Raise the Pacific Panel to the maximum height. Insert two each 2x4's 16" long, under the actuator frame as shown picture at the right. This prevents the frame from lowering and takes the pressure off of the actuator. **Lower the panel to just above the wooden blocks.**



WARNING: Do not power the actuator down against the wooden blocks. Failure to stop lowering the panel before hitting the wooden blocks will cause damage to the actuator.

3. Remove the lower front panel (center) from the Pacific Panel to gain access to the front end of the actuator (shown at the right).
4. Using the provided 9/64 ball-point hex driver, remove the three socket head screws indicated in picture at the right. Once the three screws are removed, the motor can be taken off of the actuator. This exposes the actuator brake and coupler. If the panel had yet to come down on the wood blocks used in step 2, it should now.
5. Remove the coupler and old brake assembly from the shaft.
6. Inspect the brake cavity of the actuator casting and brake. If grease is present, then the shaft seal is damaged. A replacement seal is not available. Immediately contact Penner Mfg Parts at 1-800-732-0717 for options.
7. If there is no grease, then clean the brake residue from the casting cavity.
8. Place the new brake assembly in the cavity and on the shaft with the side of the brake assembly that is shown in the picture, to the right, going in first. A needle nose pliers works well for this step.
9. Install the provided rubber coupler onto the actuator shaft, on top of the brake.



Coupler

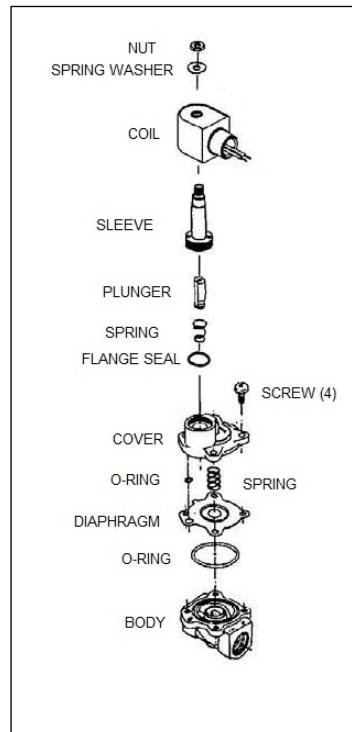


Brake assembly

WARNING: Failure to align the slots on the actuator shaft, the coupler, and the motor will damage the actuator.

10. Install the motor ensuring that the coupler driver aligns with the slots on the motor shaft.
11. Re-install the screws which were previously removed and tighten.
12. Raise the panel to maximum height and remove the wooden blocks.
13. Re-assemble the previously removed panels on the Pacific Panel.

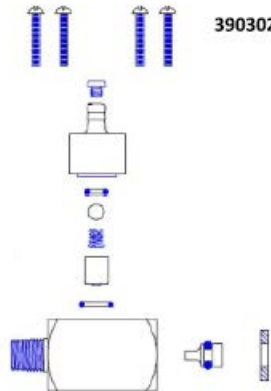
Solenoid Parts Breakdown



140124 - Solenoid Valve Complete

1401308 - Service kit for Solenoid Valve
 (Includes both O-rings, diaphragm, both springs, flange seal, plunger, and a tool (not shown) to remove the sleeve.)

Dema Injector Parts



390302 - DEMA INJECTOR - 202CT



If you have problems or questions with your Pacific Tub or its parts,
Please, contact Penner Mfg Inc. at the phone numbers listed below.

PENNER PATIENT CARE, INC
Box 523 / 102 Grant St.
Aurora, NE 68818

1-866-PENNERS

1-866-736-6377

1-800-732-0717

E-mail Address: pennersales@hamilton.net

Web Site: www.pennercareinc.com